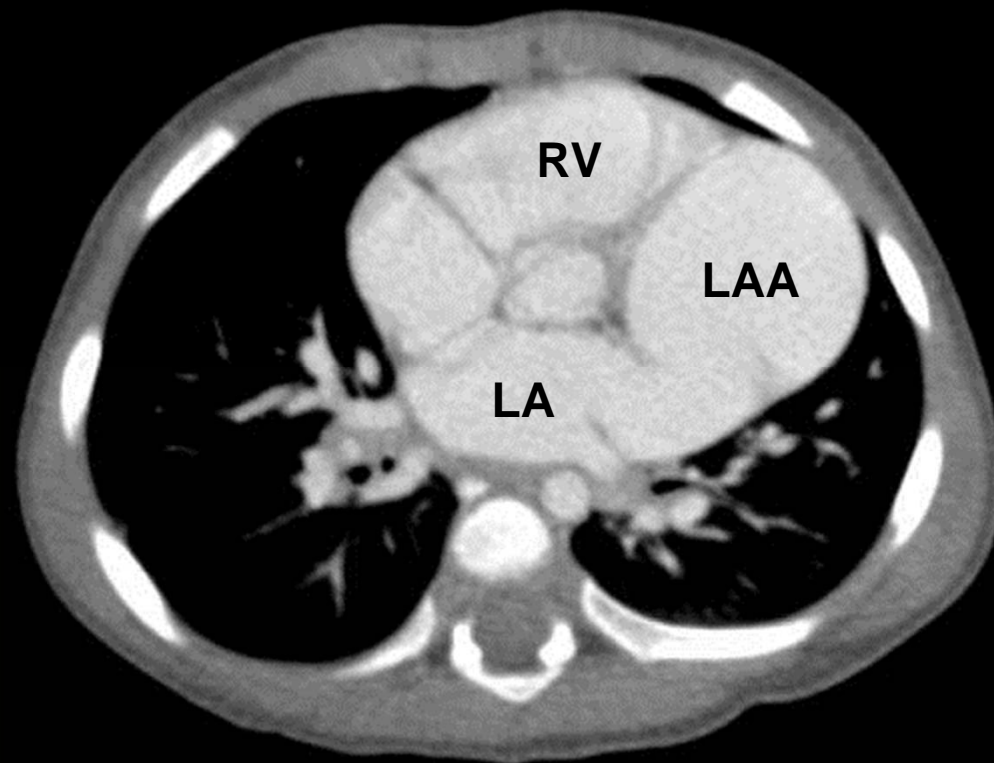
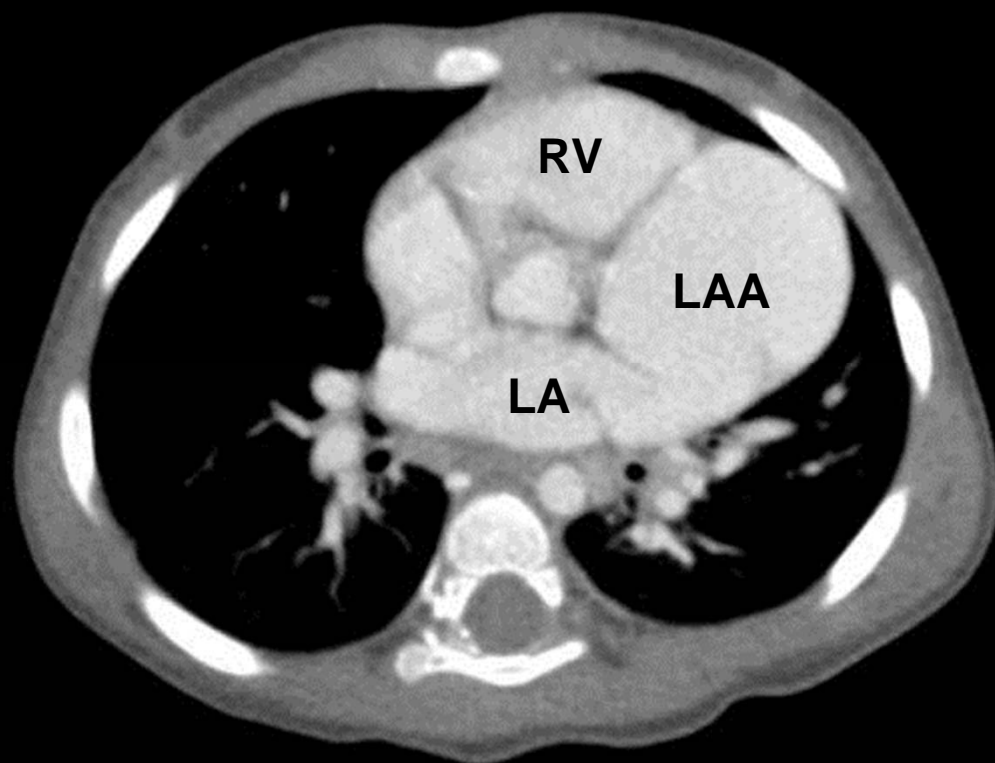


# **Case: F/17month**

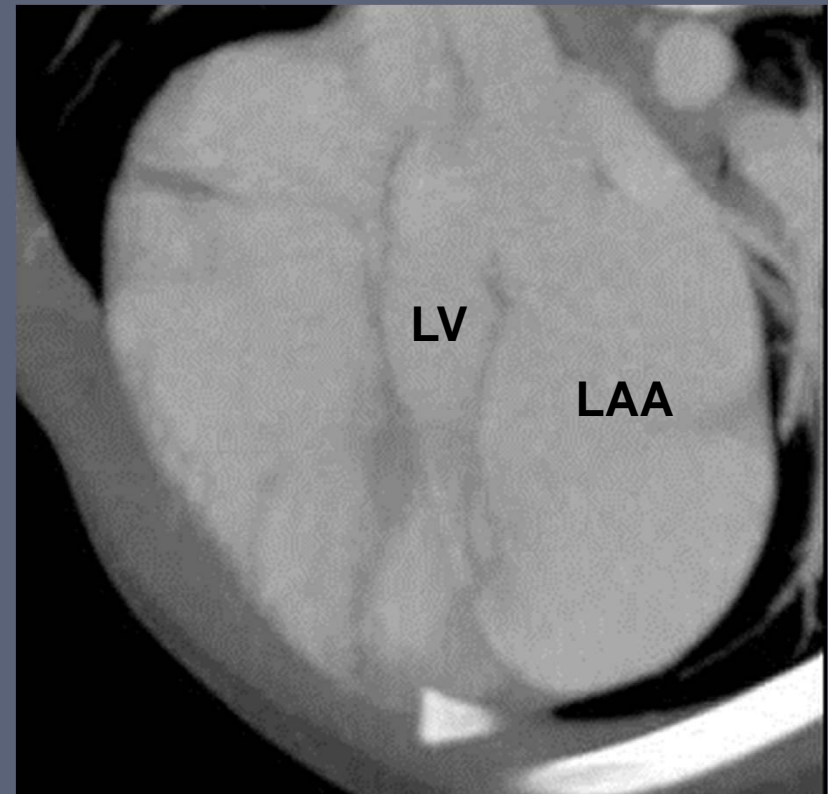
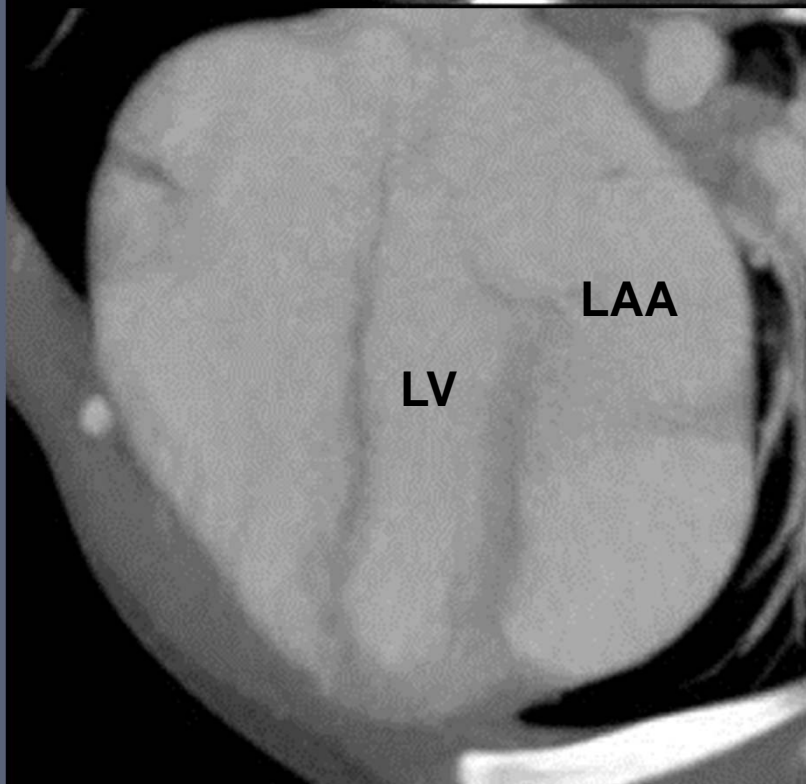
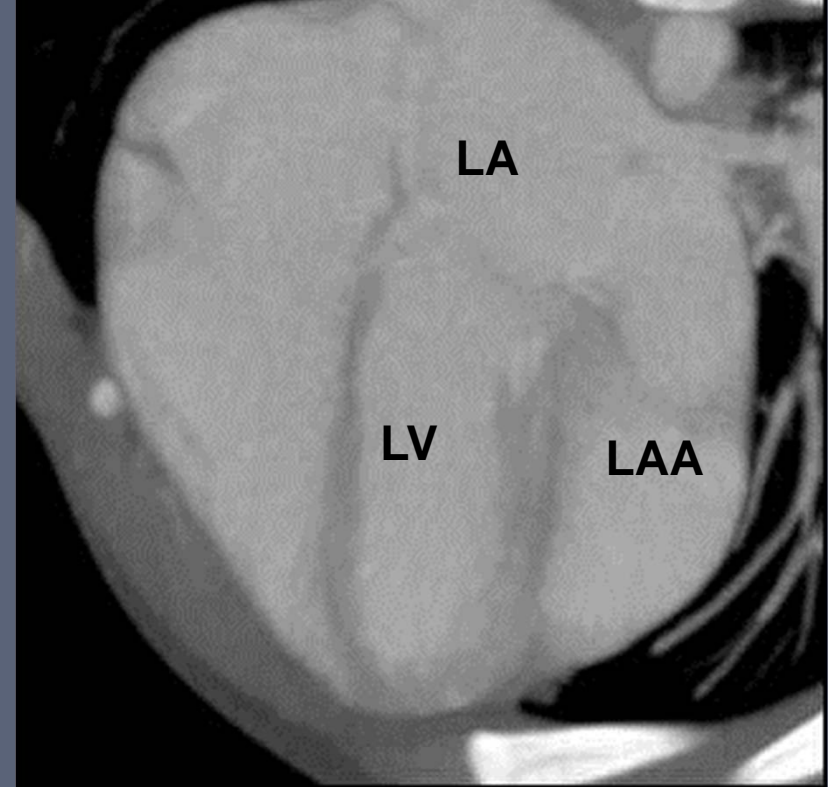
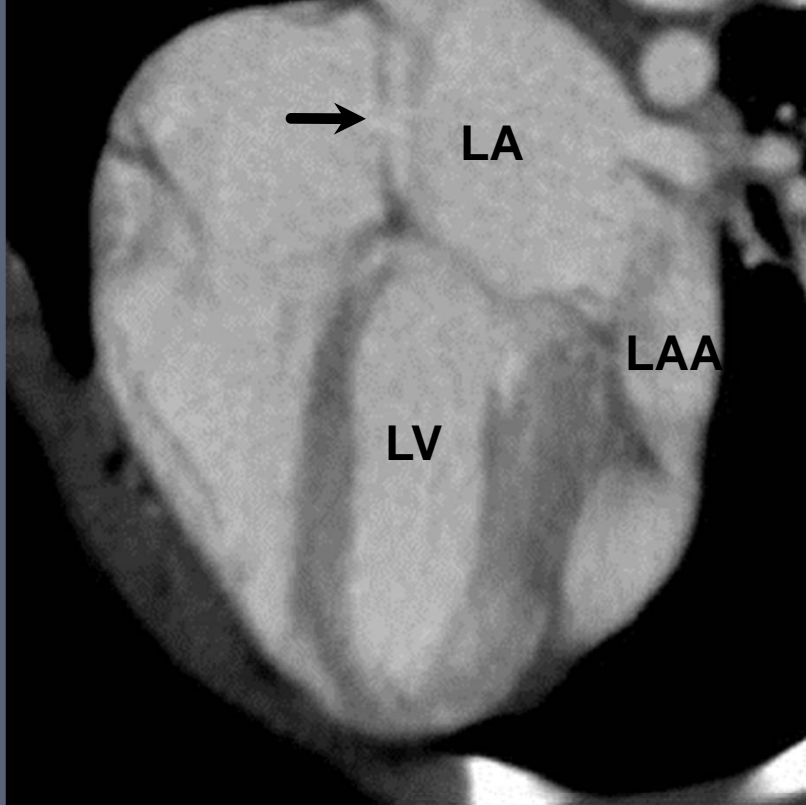
- **C.C: Cardiac murmur**

**Presented by Sang Il Choi, Eun Ju Chun.  
Seoul National Univ. Bun-Dang Hospital (SNUBH), Seoul, Korea**









# **Radiological Findings**

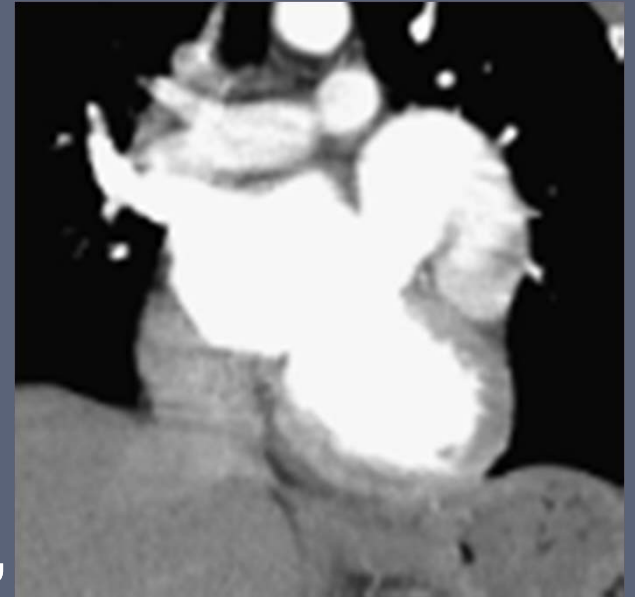
- **Simple Chest PA; Cardiomegaly with prominent left cardiac border**
- **ECG-gated coronary CT angiography;**
  - **Markedly dilated left atrial appendage and it is extended to left lateral aspect of LV.**
  - **Focal atrial septal defect (arrow) on 4-chamber view.**

# Op. findings

- Normal cardiac size
- Large aneurysm (4X5X3 cm) is connected with LA auricle and it is located to left lateral aspect of LV
- 1cm sized stalk
- Associated with secundum ASD

# Review : Atrial appendage aneurysm

- Congenital / Acquired
- Type - Intrapericardial
  - Extrapericardial; associated with defect of pericardium
- RAAA :10 cases, LAAA:80 cases
- Pathogenesis: dysplasia of atrial muscle, trauma
- Sx; asymptomatic ~ arrhythmia, respiratory distress, cardiac tamponade
- Clinical significance: thromboembolic source
- Sx(+) : surgical treatment



# Rt atrial appendage aneurysm

