

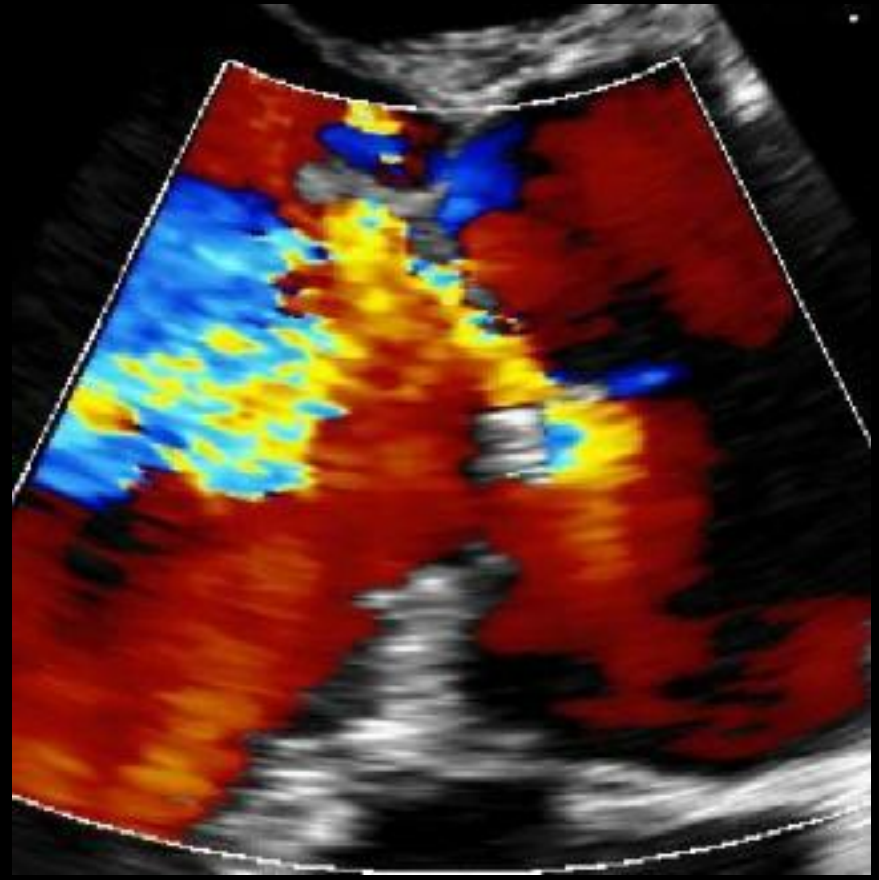
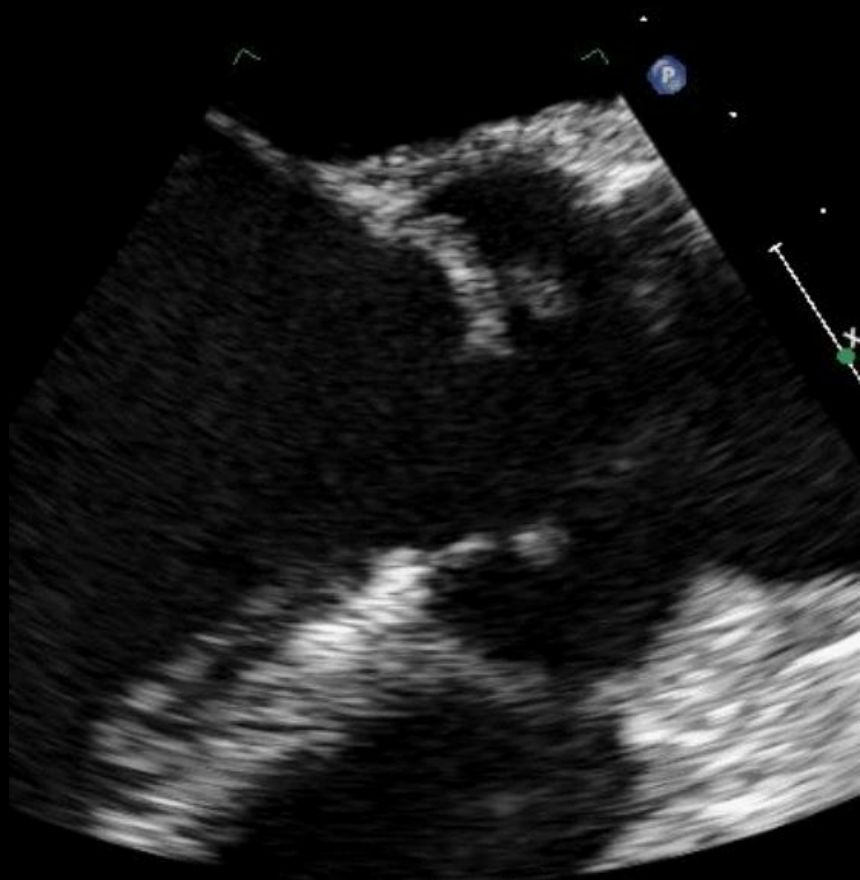
- **M/30**
- **C.C**
  - Dizziness and general weakness (1 MA)
  - Dizziness, nausea, diaphoresis (1 WA)

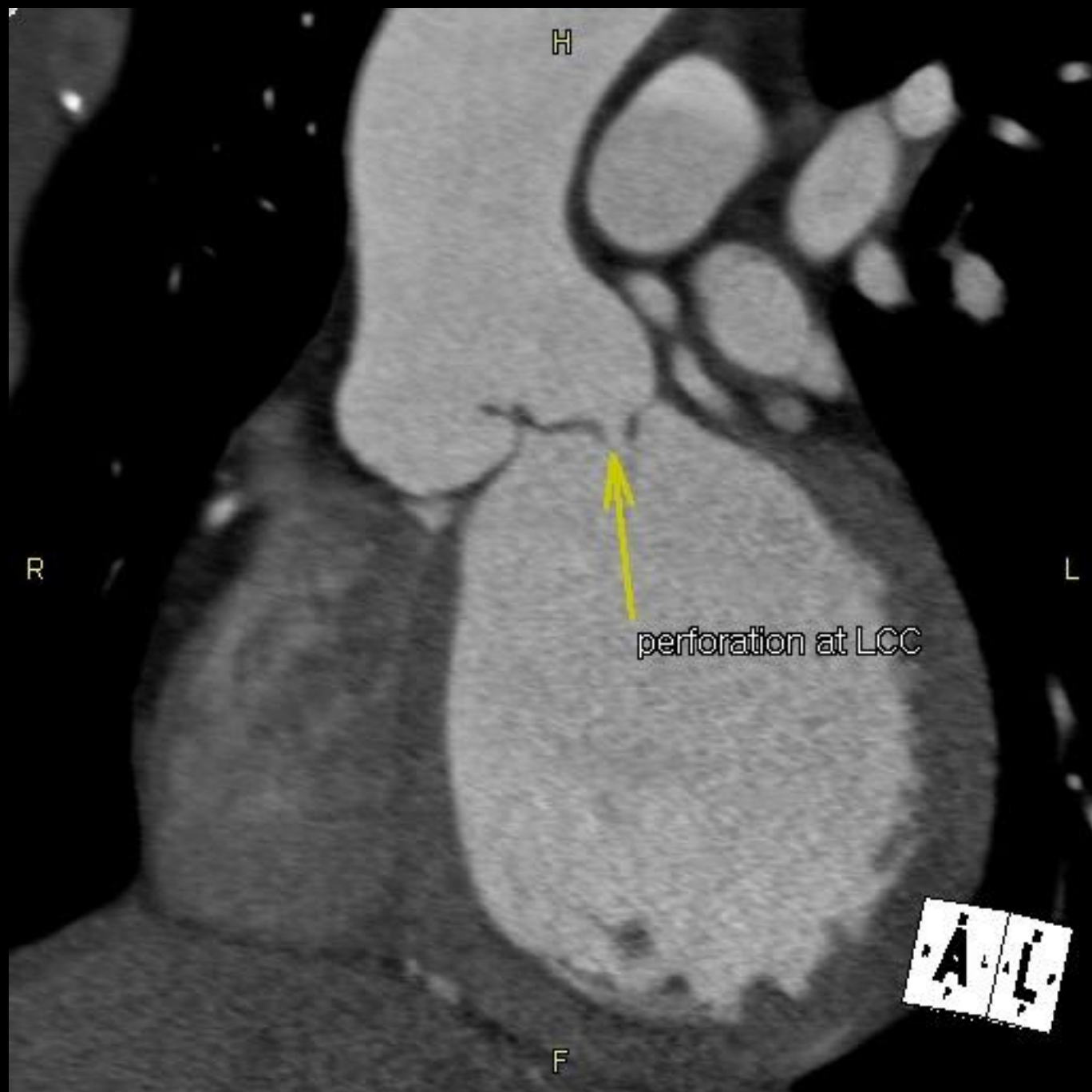
- **Past medical history**
  - Aortic valve repair (24YA)
- **P/E**
  - Fever/chill (-/-)
  - Sweating (+)

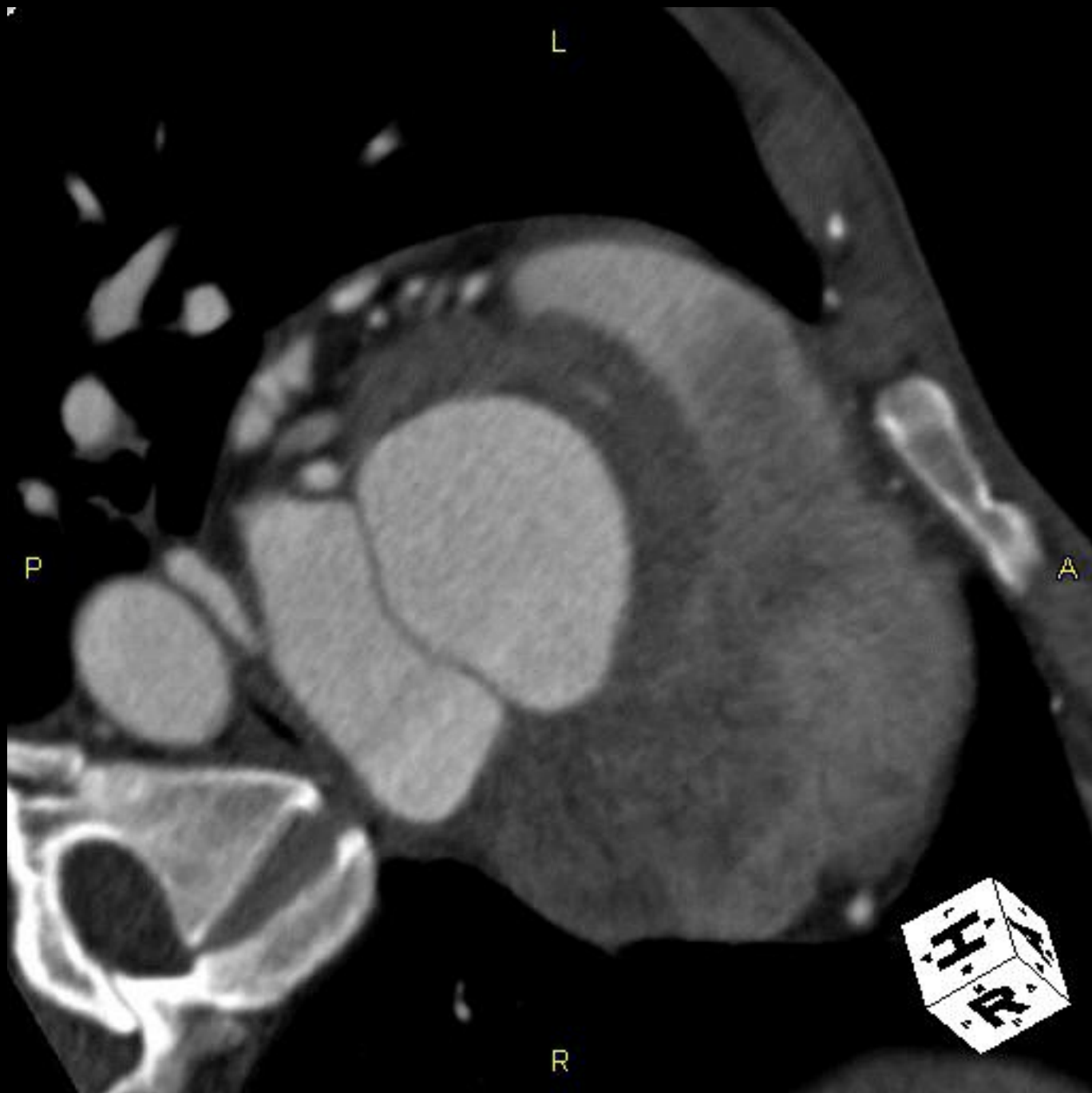
# Lab findings

	Results	Normal range
<b>WBC</b> ( $\times 10^3/\mu\text{l}$ )	9.7	4 – 10
<b>Neutrophil</b> (%)	82	50 – 75
<b>ESR</b> (mm/hr)	32	9
<b>CRP</b> (mg/dl)	5.77	0.6
<b>CK-MB</b> (ng/ml)	23.0	5
<b>Troponin-I</b> (ng/ml)	2.88	1.5

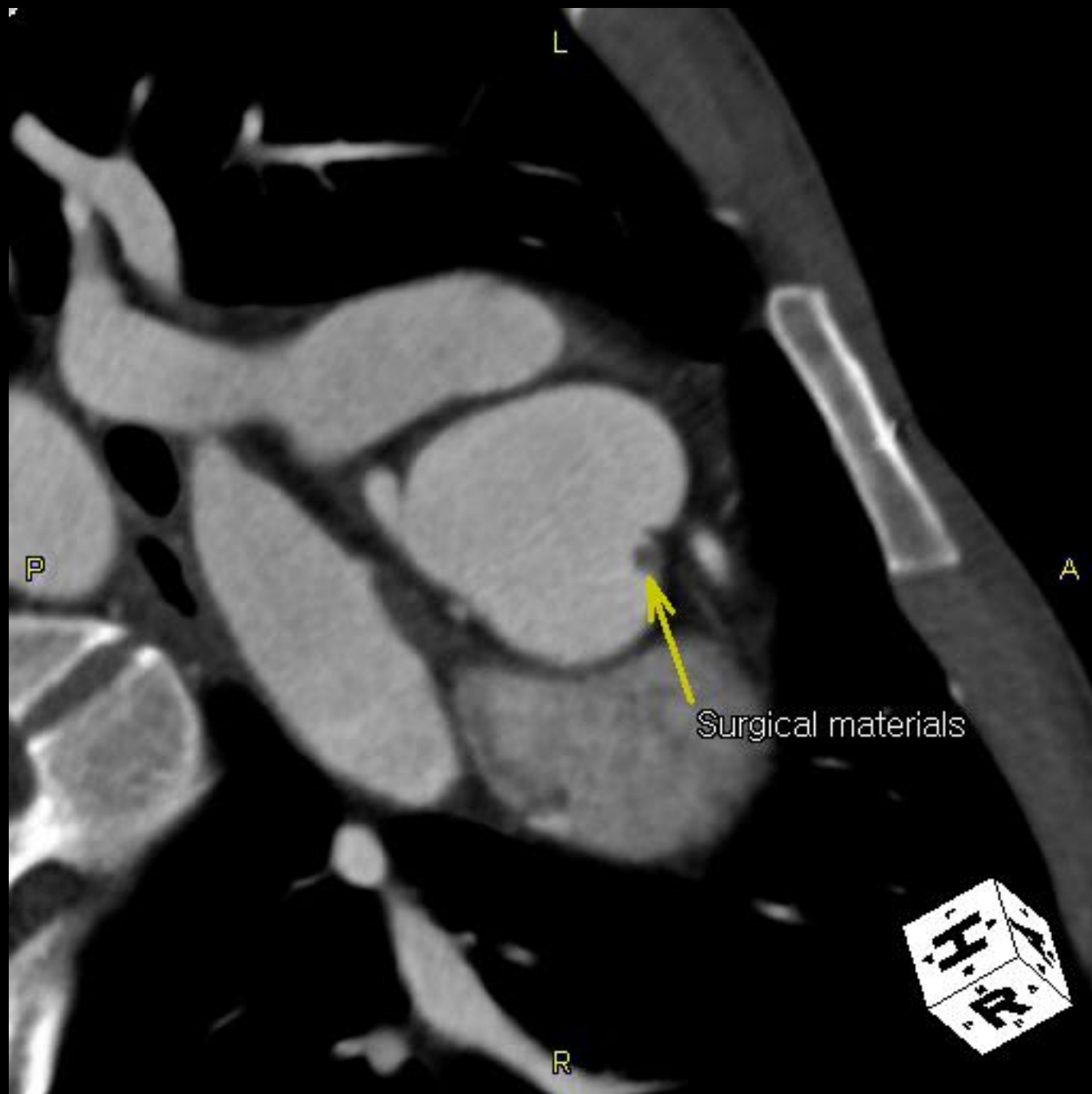
# TEE











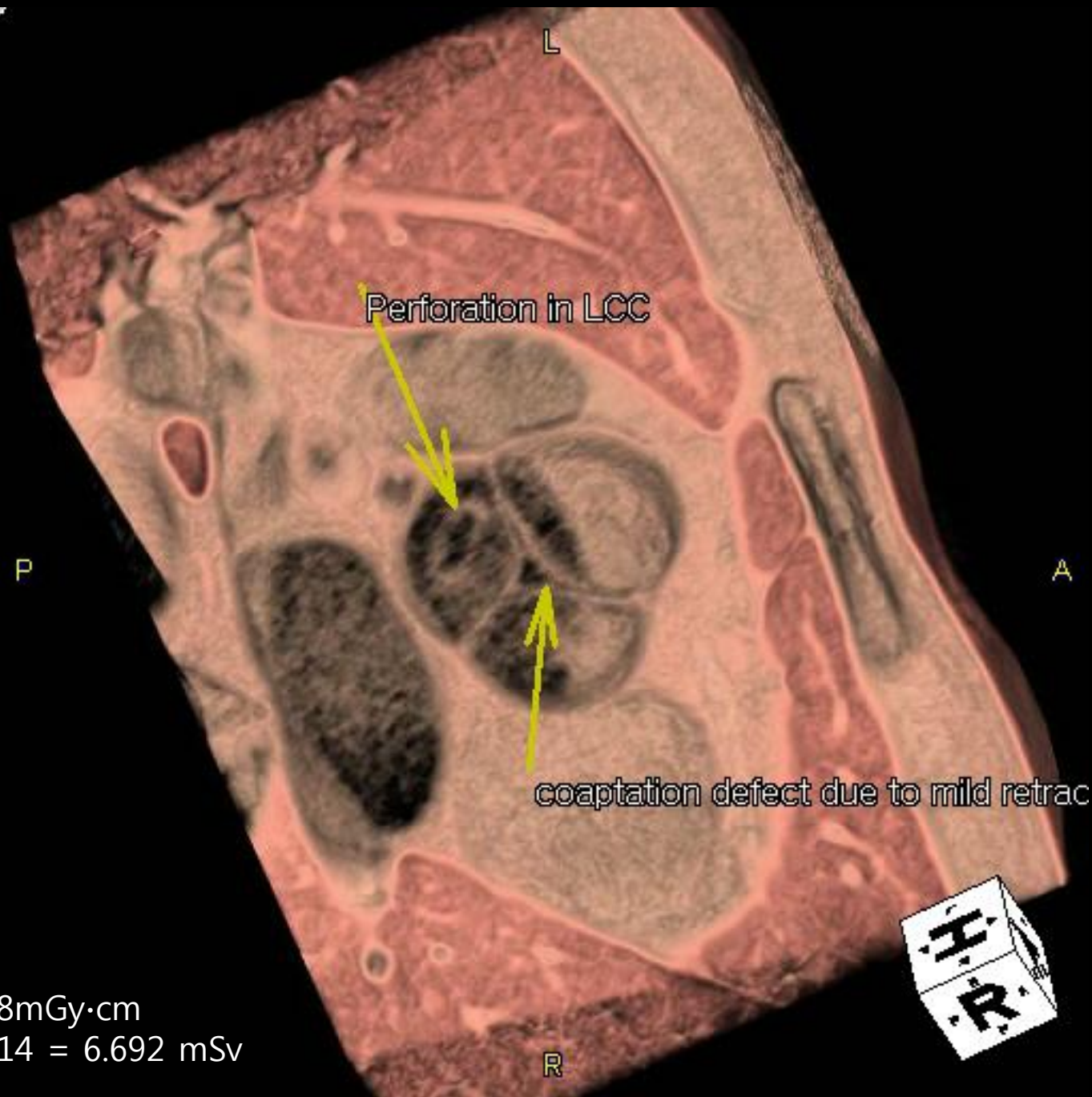








Total DLP 478mGy·cm  
 $E = 478 \times 0.014 = 6.692 \text{ mSv}$

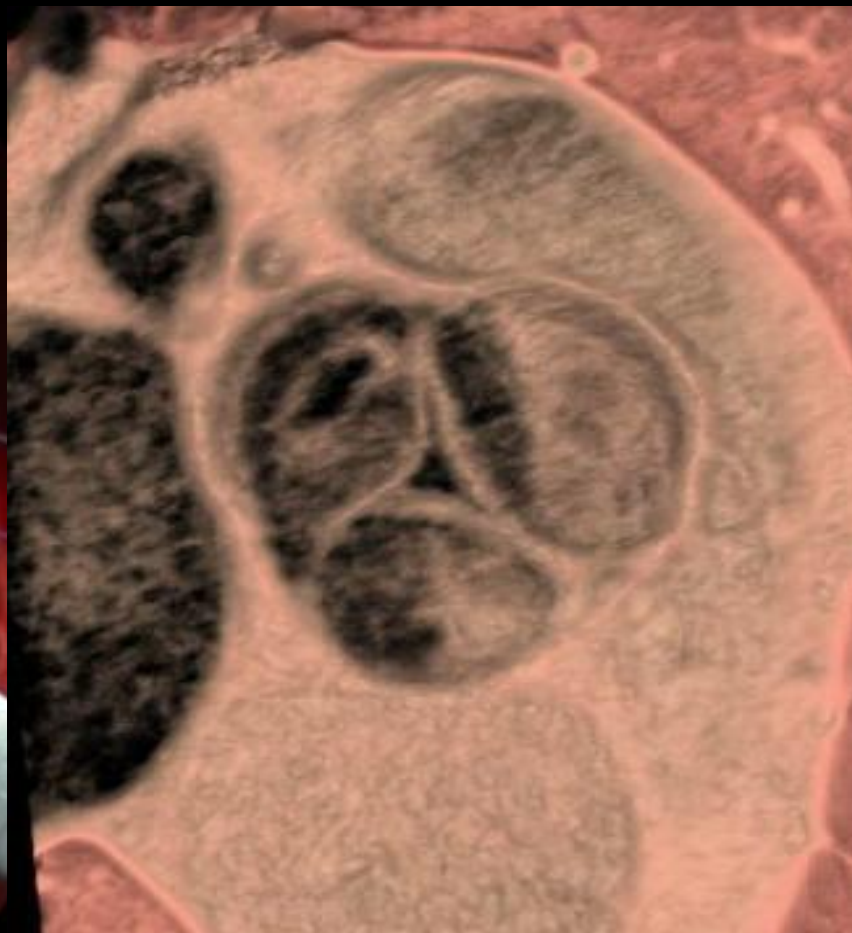


Total DLP 478mGy·cm  
 $E = 478 \times 0.014 = 6.692 \text{ mSv}$

# OP findings

- **Op name: redo AVR**
- Aortic valve
  - previous AVP (commisure suture with pledget) and VSD closure state
  - Tricuspid, leaflet thickening (+), calcification (-)
  - LCC perforation : central portion, about 7-8mm in diameter
  - Diffuse aneurysmal change at membranous septum.
  - Aortic wall base thinning d/t scar healing





# Diagnosis

- Infective endocarditis with coronary cusp perforation