

Case 6: 13 yr/ M

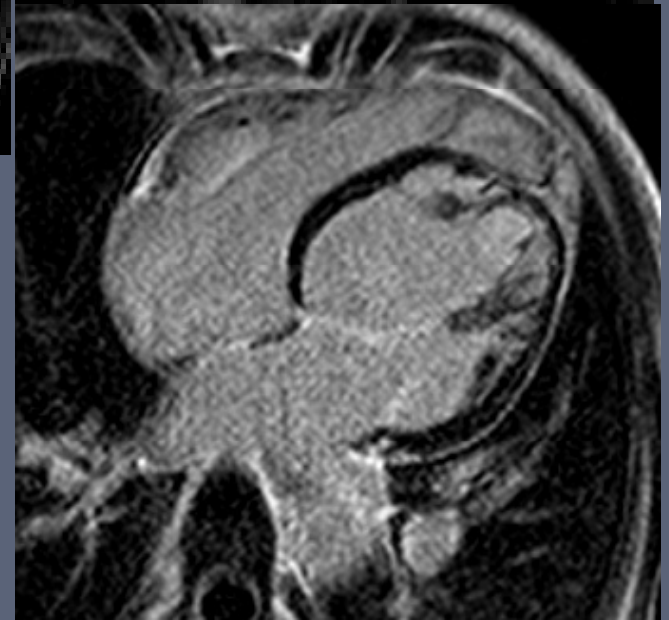
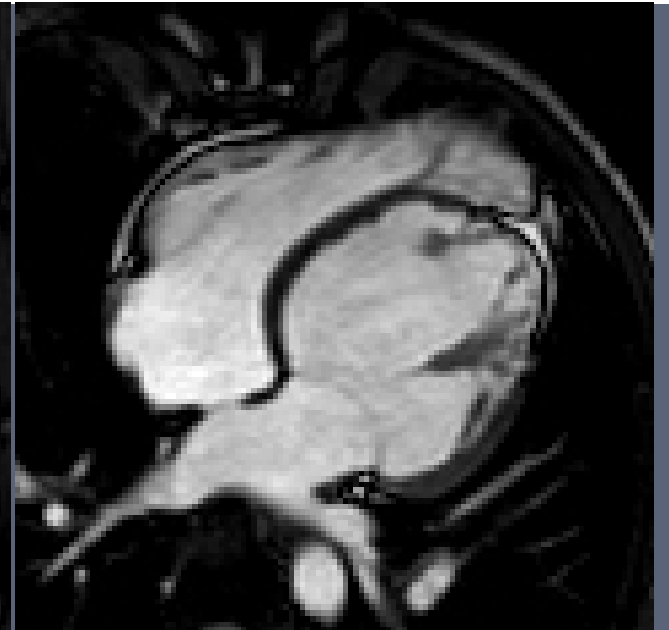
- **Right arm weakness, sudden onset**
- **Past Hx) Asthma (+)**
- **Op Hx) Paranasal sinusitis**

**Presented by Yeong Jin Kim, Byung Wook Choi.
Yonsei University Medical Center (YUMC), Seoul, Korea**

Clinical Features

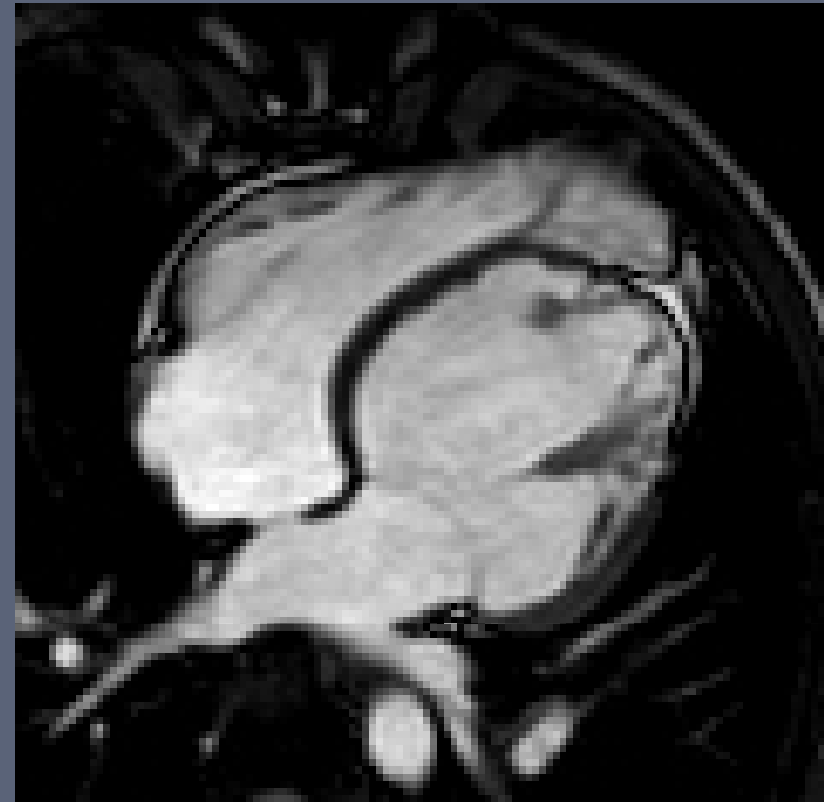
- Recent de novo EKG abnormality
Low voltage QRS
- Echocardiography
LV enlargement
Decreased LV systolic Fx.
IVS thinning

Cardiac MRI



■ Which category will you take first?

1. Ischemic heart ds.
2. Primary Cardiomyopathy
3. Valvular heart ds.
4. Congenital heart ds.

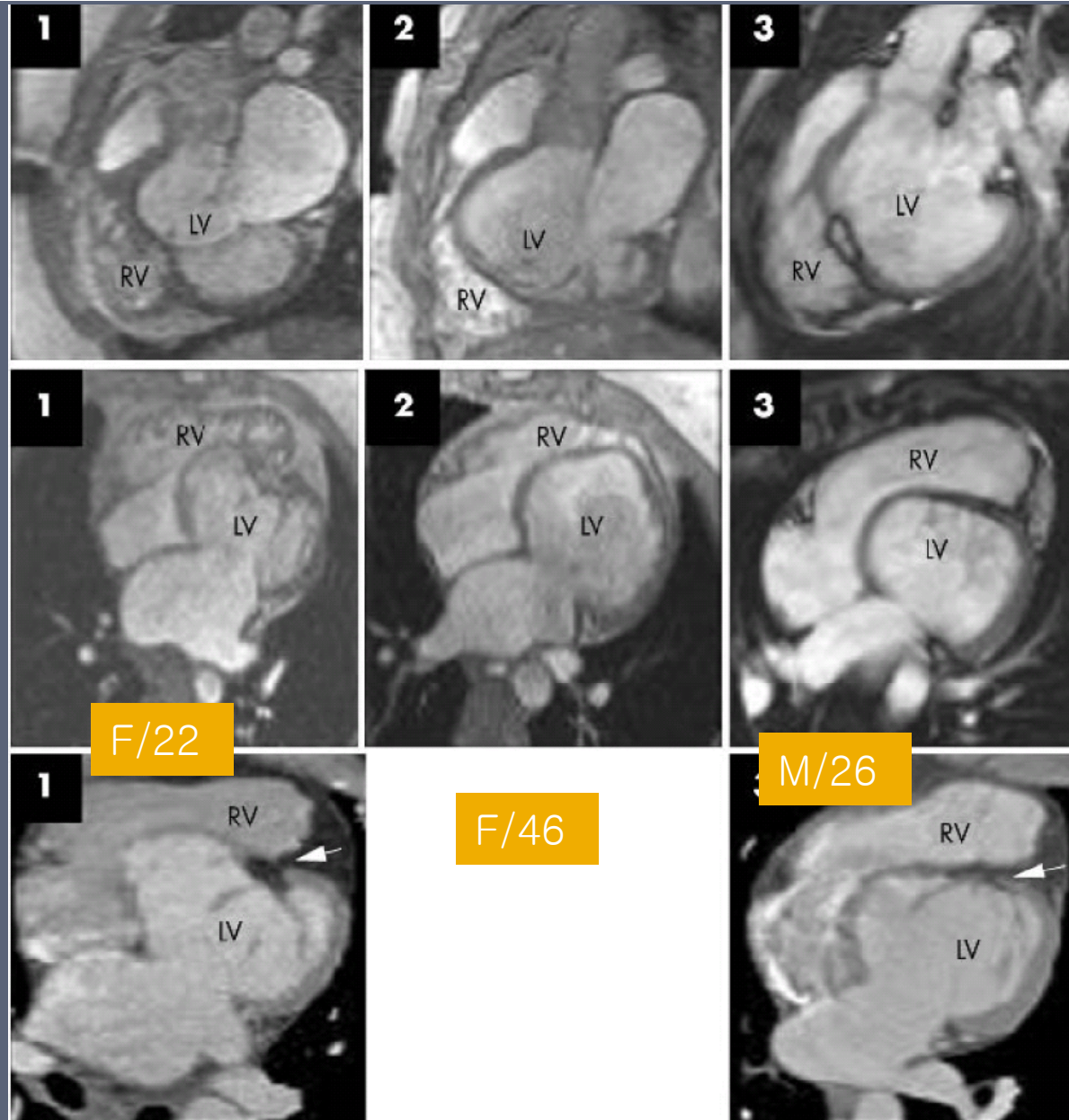


Isolated left ventricular apical hypoplasia: a new congenital anomaly described with cardiac tomography

M Fernandez-Valls, M B Srichai, A E Stillman, R D White

See end of article for

Heart 2004;90:552-555. doi: 10.1136/hrt.2003.010637



Isolated LV apical hypoplasia

- Truncated & spherical LV w rightward bulging of IVS
- Systolic & diastolic LV dysfx.
- LV apical myocardium replaced by fatty material
- Common in distal IVS, papillary M. origin
- RV elongation w wrapping around LV apex

CONGENITAL HEART DISEASE

Isolated left ventricular apical hypoplasia: a new congenital anomaly described with cardiac tomography

M Fernandez-Valls, M B Srichai, A E Stillman, R D White

See end of article for

Heart 2004;90:552-555. doi: 10.1136/hrt.2003.010637

Cardiovascular Magnetic Resonance of Isolated Left Ventricular Apical Hypoplasia

F/37

Andrew S. Flett, BSc; Perry M. Elliott, MD; James C. Moon, MD

